

Installation Guide

Rosetta Stone

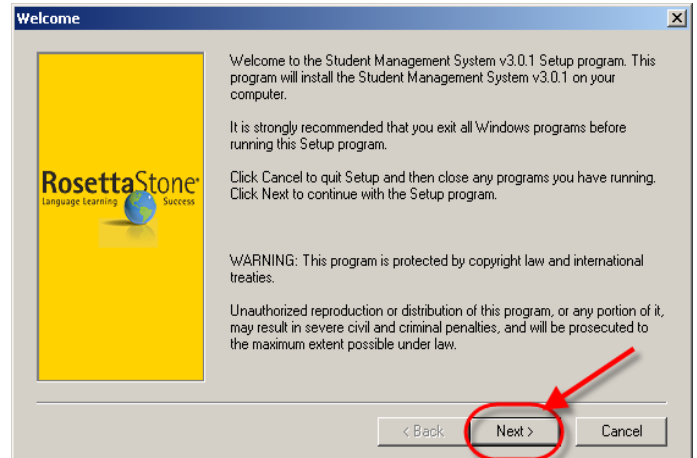


***Student Management
System***

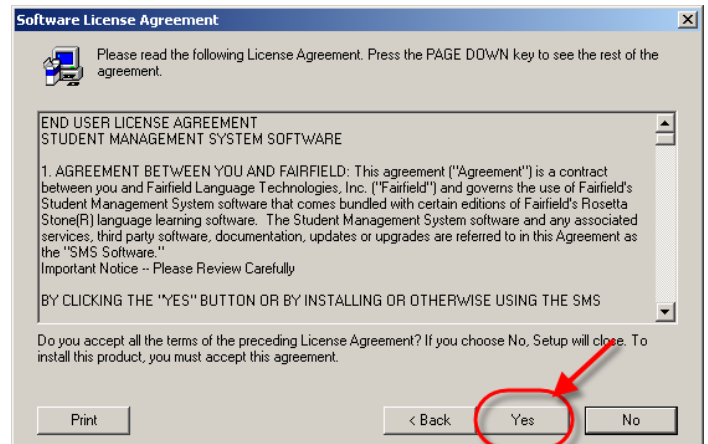
V.3.0.1

Installing the Student Management System

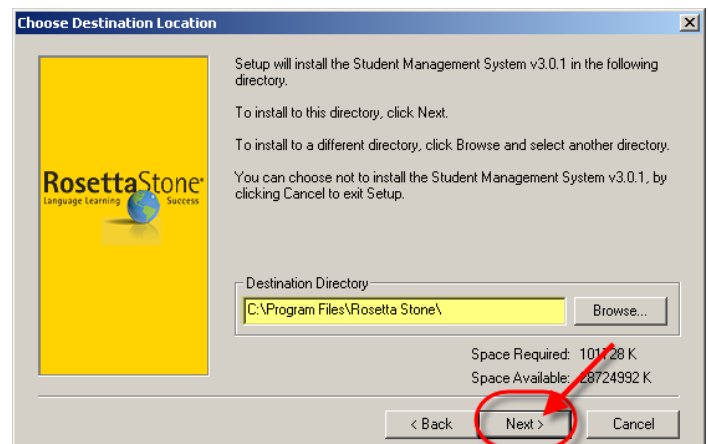
Step 1: Insert the “Student Management System” CD. At the welcome screen click “Next.”



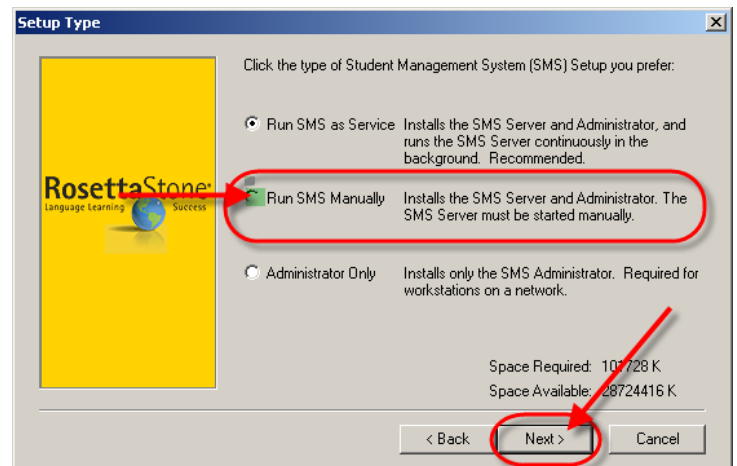
Step 2: Click “Yes” at the “Software License Agreement” page



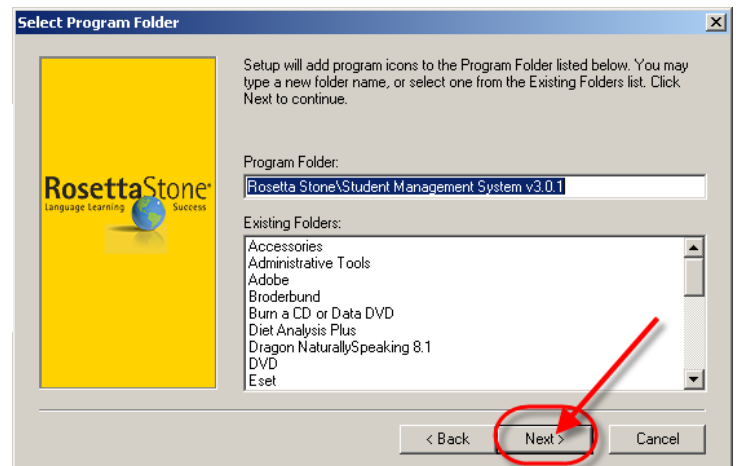
Step 3: Make sure the “Destination Directory” says, “C:/Program Files/Rosetta Stone/”, Then click “Next”



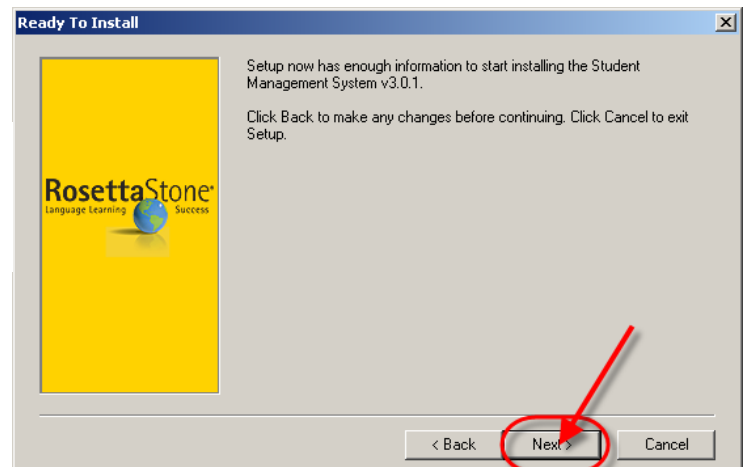
Step 4: Select “Run SMS Manually”, then click “Next”



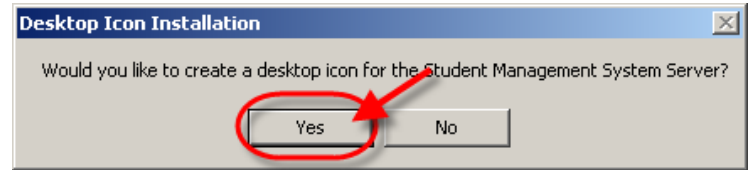
Step 5: Make sure the “Program Folder” says “Rosetta Stone/Student Management System v3.0.1”, then click “Next”



Step 6: Click “Next” at the “Ready to Install” page



Step 7: Select “Yes” at the “Desktop Installation Screen”



Step 8: Check both boxes, then click “Close”

